



Pony Testing International Group



扫二维码  
关注谱尼测试

## Test Report

NO.: BNC5DGUL47172744

Date: 2019.01.29

Page 1 of 33

Applicant:

JIANGHAI(NANTONG)FILM CAPACITOR CO.,LTD.

The following sample(s) was/were submitted and identified on behalf of the client as:

Sample Name: Film Capacitor with metal case

Sample Received Date: 2019.01.28

Testing Period: 2019.01.28 to 2019.01.29

Test Requested: RoHS Directive 2011/65/EU & (EU)2015/863 Annex II

Test Methods:

- (1) IEC 62321-5 Edition 1.0:2013 method, Lead analysis is performed by AAS
- (2) IEC 62321-5 Edition 1.0:2013 method, Cadmium analysis is performed by AAS
- (3) IEC 62321-4 Edition 1.0:2013 method, Mercury analysis is performed by ICP-OES
- (4) IEC 62321-7-2 Edition 1.0:2017 method, Hexavalent Chromium analysis is performed by UV-Vis  
IEC62321-7-1Edition1.0:2015 method,Hexavalent Chromium analysis is performed by UV-Vis
- (5) IEC 62321-6 Edition 1.0:2015 method, PBBs and PBDEs analysis is performed by GC-MS
- (6) IEC 62321-8 Edition 1.0:2017 method, Phthalate analysis is performed by GC-MS

Test Result:

Please refer to next page(s)

Approved by:

*Caojie*



微信扫一扫，使用小程序



小程序扫一扫，在线验证

Code: of67y390

The page below is blank



Pony Testing International Group Shanghai Co., Ltd.  
Company Address: No.35, 680, Gui Ping Road, Xuhui District, Shanghai

Beijing Lab: (010)83055000	Changchun Lab: (0431)85150908	Shijiazhuang Lab: (0311)85376660	Wuhan Lab: (027)83997127
Shanghai Lab: (021)64851999	Dalian Lab: (0411)87336618	Xian Lab: (029)89608785	Hefei Lab: (0551)63843474
Qingdao Lab: (0532)88706866	Haerbin Lab: (0451)88104651	Huhehaote Lab: (0471)3450025	Guangzhou Lab: (020)89224310
Shenzhen Lab: (0755)26050909	Zhengzhou Lab: (0371)69350670	Hangzhou Lab: (0571)87219096	Xiamen Lab: (0592)5568048
Tianjin Lab: (022)27360730	Xinjiang Lab: (0991)6684186	Ningbo Lab: (0574)87736499	Chengdu Lab: (028)87702708
Suzhou Lab: (0512)62997900			



扫二维码  
关注谱尼测试



Pony Testing International Group

## Test Report

NO.: BNC5DGUL47172744

Date: 2019.01.29

Page 2 of 33

Test Result (Unit: mg/kg)

Sample Number and Name: L47172744 Film Capacitor with metal case

Sample No.: L41299704

Sample Name: Metallized film

Supplier Name: Guangdong Metalfilm Tech Co.,Ltd.

Test Item	MDL	Test Result	RoHS Limit
Lead (Pb)	1	N.D.	1000
Cadmium (Cd)	1	N.D.	100
Mercury (Hg)	1	N.D.	1000
Hexavalent Chromium (Cr <sup>6+</sup> )	8	N.D.	1000
Sum of PBBs	—	N.D.	1000
Bromobiphenyl	5	N.D.	—
Dibromobiphenyl	5	N.D.	—
Tribromobiphenyl	5	N.D.	—
Tetrabromobiphenyl	5	N.D.	—
Pentabromobiphenyl	5	N.D.	—
Hexabromobiphenyl	5	N.D.	—
Heptabromobiphenyl	5	N.D.	—
Octabromobiphenyl	5	N.D.	—
Nonabromobiphenyl	5	N.D.	—
Decabromobiphenyl	5	N.D.	—
Sum of PBDEs	—	N.D.	1000
Bromodiphenyl ether	5	N.D.	—
Dibromodiphenyl ether	5	N.D.	—
Tribromodiphenyl ether	5	N.D.	—
Tetrabromodiphenyl ether	5	N.D.	—
Pentabromodiphenyl ether	5	N.D.	—
Hexabromodiphenyl ether	5	N.D.	—
Heptabromodiphenyl ether	5	N.D.	—
Octabromodiphenyl ether	5	N.D.	—
Nonabromodiphenyl ether	5	N.D.	—
Decabromodiphenyl ether	5	N.D.	—

The page below is blank



©Hotline 400-819-5688 www.ponytest.com

Pony Testing International Group Shanghai Co., Ltd.  
Company Address: No.35, 680, Gui Ping Road, Xuhui District, Shanghai

Beijing Lab: (010)83055000  
Shanghai Lab: (021)64851999  
Qingdao Lab: (0532)88706866  
Shenzhen Lab: (0755)26050909  
Tianjin Lab: (022)27360730  
Suzhou Lab: (0512)62997900  
Changchun Lab: (0431)85150908  
Dalian Lab: (0411)87336618  
Haerbin Lab: (0451)88104651  
Zhengzhou Lab: (0371)69350670  
Xinjiang Lab: (0991)6684186  
Shijiazhuang Lab: (0311)85376660  
Xian Lab: (029)89608785  
Huhehaote Lab: (0471)3450025  
Hangzhou Lab: (0571)87219096  
Ningbo Lab: (0574)87736499  
Wuhan Lab: (027)83997127  
Hefei Lab: (0551)63843474  
Guangzhou Lab: (020)89224310  
Xiamen Lab: (0592)5568048  
Chengdu Lab: (028)87702708



扫二维码  
关注谱尼测试



Pony Testing International Group

## Test Report

NO.: BNC5DGUL47172744

Date: 2019.01.29

Page 3 of 33

Test Result (Unit: mg/kg)

Sample No.: L41300704

Sample Name: Metallized film

Supplier Name: Zhejiang Nanyang Technology Joint-Stock Co.,Ltd.

Test Item	MDL	Test Result	RoHS Limit
Lead (Pb)	1	N.D.	1000
Cadmium (Cd)	1	N.D.	100
Mercury (Hg)	1	N.D.	1000
Hexavalent Chromium (Cr <sup>6+</sup> )	8	N.D.	1000
Sum of PBBs	—	N.D.	1000
Bromobiphenyl	5	N.D.	—
Dibromobiphenyl	5	N.D.	—
Tribromobiphenyl	5	N.D.	—
Tetrabromobiphenyl	5	N.D.	—
Pentabromobiphenyl	5	N.D.	—
Hexabromobiphenyl	5	N.D.	—
Heptabromobiphenyl	5	N.D.	—
Octabromobiphenyl	5	N.D.	—
Nonabromobiphenyl	5	N.D.	—
Decabromobiphenyl	5	N.D.	—
Sum of PBDEs	—	N.D.	1000
Bromodiphenyl ether	5	N.D.	—
Dibromodiphenyl ether	5	N.D.	—
Tribromodiphenyl ether	5	N.D.	—
Tetrabromodiphenyl ether	5	N.D.	—
Pentabromodiphenyl ether	5	N.D.	—
Hexabromodiphenyl ether	5	N.D.	—
Heptabromodiphenyl ether	5	N.D.	—
Octabromodiphenyl ether	5	N.D.	—
Nonabromodiphenyl ether	5	N.D.	—
Decabromodiphenyl ether	5	N.D.	—

The page below is blank



©Hotline 400-819-5688 www.ponytest.com

Pony Testing International Group Shanghai Co., Ltd.  
Company Address: No.35, 680, Gui Ping Road, Xuhui District, Shanghai

Beijing Lab: (010)83055000  
Shanghai Lab: (021)64851999  
Qingdao Lab: (0532)88706866  
Shenzhen Lab: (0755)26050909  
Tianjin Lab: (022)27360730  
Suzhou Lab: (0512)62997900  
Changchun Lab: (0431)85150908  
Dalian Lab: (0411)87336618  
Haerbin Lab: (0451)88104651  
Zhengzhou Lab: (0371)69350670  
Xinjiang Lab: (0991)6684186  
Shijiazhuang Lab: (0311)85376660  
Xian Lab: (029)89608785  
Huhehaote Lab: (0471)3450025  
Hangzhou Lab: (0571)87219096  
Ningbo Lab: (0574)87736499  
Wuhan Lab: (027)83997127  
Hefei Lab: (0551)63843474  
Guangzhou Lab: (020)89224310  
Xiamen Lab: (0592)5568048  
Chengdu Lab: (028)87702708





扫二维码  
关注谱尼测试



Pony Testing International Group

## Test Report

NO.: BNC5DGUL47172744

Date: 2019.01.29

Page 4 of 33

Test Result (Unit: mg/kg)

Sample No.: L41301704

Sample Name: Plastic core

Supplier Name: Zhejiang Zhognze Electric Co., Ltd.

Test Item	MDL	Test Result	RoHS Limit
Lead (Pb)	1	N.D.	1000
Cadmium (Cd)	1	N.D.	100
Mercury (Hg)	1	N.D.	1000
Hexavalent Chromium (Cr <sup>6+</sup> )	8	N.D.	1000
Sum of PBBs	—	N.D.	1000
Bromobiphenyl	5	N.D.	—
Dibromobiphenyl	5	N.D.	—
Tribromobiphenyl	5	N.D.	—
Tetrabromobiphenyl	5	N.D.	—
Pentabromobiphenyl	5	N.D.	—
Hexabromobiphenyl	5	N.D.	—
Heptabromobiphenyl	5	N.D.	—
Octabromobiphenyl	5	N.D.	—
Nonabromobiphenyl	5	N.D.	—
Decabromobiphenyl	5	N.D.	—
Sum of PBDEs	—	N.D.	1000
Bromodiphenyl ether	5	N.D.	—
Dibromodiphenyl ether	5	N.D.	—
Tribromodiphenyl ether	5	N.D.	—
Tetrabromodiphenyl ether	5	N.D.	—
Pentabromodiphenyl ether	5	N.D.	—
Hexabromodiphenyl ether	5	N.D.	—
Heptabromodiphenyl ether	5	N.D.	—
Octabromodiphenyl ether	5	N.D.	—
Nonabromodiphenyl ether	5	N.D.	—
Decabromodiphenyl ether	5	N.D.	—

The page below is blank



©Hotline 400-819-5688 www.ponytest.com

Pony Testing International Group Shanghai Co., Ltd.  
Company Address: No.35, 680, Gui Ping Road, Xuhui District, Shanghai

Beijing Lab: (010)83055000  
Shanghai Lab: (021)64851999  
Qingdao Lab: (0532)88706866  
Shenzhen Lab: (0755)26050909  
Tianjin Lab: (022)27360730  
Suzhou Lab: (0512)62997900  
Changchun Lab: (0431)85150908  
Dalian Lab: (0411)87336618  
Haerbin Lab: (0451)88104651  
Zhengzhou Lab: (0371)69350670  
Xinjiang Lab: (0991)6684186  
Shijiazhuang Lab: (0311)85376660  
Xian Lab: (029)89608785  
Huhehaote Lab: (0471)3450025  
Hangzhou Lab: (0571)87219096  
Ningbo Lab: (0574)87736499  
Wuhan Lab: (027)83997127  
Hefei Lab: (0551)63843474  
Guangzhou Lab: (020)89224310  
Xiamen Lab: (0592)5568048  
Chengdu Lab: (028)87702708





扫二维码  
关注谱尼测试



Pony Testing International Group

## Test Report

NO.: BNC5DGUL47172744

Date: 2019.01.29

Page 5 of 33

Test Result (Unit: mg/kg)

Sample No.: L41302704

Sample Name: Plastic core

Supplier Name: Nantong Yuanrun Plastic Products Co., Ltd.

Test Item	MDL	Test Result	RoHS Limit
Lead (Pb)	1	N.D.	1000
Cadmium (Cd)	1	N.D.	100
Mercury (Hg)	1	N.D.	1000
Hexavalent Chromium (Cr <sup>6+</sup> )	8	N.D.	1000
Sum of PBBs	—	N.D.	1000
Bromobiphenyl	5	N.D.	—
Dibromobiphenyl	5	N.D.	—
Tribromobiphenyl	5	N.D.	—
Tetrabromobiphenyl	5	N.D.	—
Pentabromobiphenyl	5	N.D.	—
Hexabromobiphenyl	5	N.D.	—
Heptabromobiphenyl	5	N.D.	—
Octabromobiphenyl	5	N.D.	—
Nonabromobiphenyl	5	N.D.	—
Decabromobiphenyl	5	N.D.	—
Sum of PBDEs	—	N.D.	1000
Bromodiphenyl ether	5	N.D.	—
Dibromodiphenyl ether	5	N.D.	—
Tribromodiphenyl ether	5	N.D.	—
Tetrabromodiphenyl ether	5	N.D.	—
Pentabromodiphenyl ether	5	N.D.	—
Hexabromodiphenyl ether	5	N.D.	—
Heptabromodiphenyl ether	5	N.D.	—
Octabromodiphenyl ether	5	N.D.	—
Nonabromodiphenyl ether	5	N.D.	—
Decabromodiphenyl ether	5	N.D.	—

The page below is blank



©Hotline 400-819-5688 www.ponytest.com

Pony Testing International Group Shanghai Co., Ltd.  
Company Address: No.35, 680, Gui Ping Road, Xuhui District, Shanghai

Beijing Lab: (010)83055000  
Shanghai Lab: (021)64851999  
Qingdao Lab: (0532)88706866  
Shenzhen Lab: (0755)26050909  
Tianjin Lab: (022)27360730  
Suzhou Lab: (0512)62997900  
Changchun Lab: (0431)85150908  
Dalian Lab: (0411)87336618  
Haerbin Lab: (0451)88104651  
Zhengzhou Lab: (0371)69350670  
Xinjiang Lab: (0991)6684186  
Shijiazhuang Lab: (0311)85376660  
Xian Lab: (029)89608785  
Huhehaote Lab: (0471)3450025  
Hangzhou Lab: (0571)87219096  
Ningbo Lab: (0574)87736499  
Wuhan Lab: (027)83997127  
Hefei Lab: (0551)63843474  
Guangzhou Lab: (020)89224310  
Xiamen Lab: (0592)5568048  
Chengdu Lab: (028)87702708



扫二维码  
关注谱尼测试



Pony Testing International Group

## Test Report

NO.: BNC5DGUL47172744

Date: 2019.01.29

Page 6 of 33

Test Result (Unit: mg/kg)

Sample No.: L41306704

Sample Name: Insulation cover

Supplier Name: Nangtong Xinyin Plastic Co., Ltd.

Test Item	MDL	Test Result	RoHS Limit
Lead (Pb)	1	N.D.	1000
Cadmium (Cd)	1	N.D.	100
Mercury (Hg)	1	N.D.	1000
Hexavalent Chromium (Cr <sup>6+</sup> )	8	N.D.	1000
Sum of PBBs	—	N.D.	1000
Bromobiphenyl	5	N.D.	—
Dibromobiphenyl	5	N.D.	—
Tribromobiphenyl	5	N.D.	—
Tetrabromobiphenyl	5	N.D.	—
Pentabromobiphenyl	5	N.D.	—
Hexabromobiphenyl	5	N.D.	—
Heptabromobiphenyl	5	N.D.	—
Octabromobiphenyl	5	N.D.	—
Nonabromobiphenyl	5	N.D.	—
Decabromobiphenyl	5	N.D.	—
Sum of PBDEs	—	N.D.	1000
Bromodiphenyl ether	5	N.D.	—
Dibromodiphenyl ether	5	N.D.	—
Tribromodiphenyl ether	5	N.D.	—
Tetrabromodiphenyl ether	5	N.D.	—
Pentabromodiphenyl ether	5	N.D.	—
Hexabromodiphenyl ether	5	N.D.	—
Heptabromodiphenyl ether	5	N.D.	—
Octabromodiphenyl ether	5	N.D.	—
Nonabromodiphenyl ether	5	N.D.	—
Decabromodiphenyl ether	5	N.D.	—

The page below is blank



©Hotline 400-819-5688 www.ponytest.com

Pony Testing International Group Shanghai Co., Ltd.  
Company Address: No.35, 680, Gui Ping Road, Xuhui District, Shanghai

Beijing Lab: (010)83055000  
Shanghai Lab: (021)64851999  
Qingdao Lab: (0532)88706866  
Shenzhen Lab: (0755)26050909  
Tianjin Lab: (022)27360730  
Suzhou Lab: (0512)62997900  
Changchun Lab: (0431)85150908  
Dalian Lab: (0411)87336618  
Haerbin Lab: (0451)88104651  
Zhengzhou Lab: (0371)69350670  
Xinjiang Lab: (0991)6684186  
Shijiazhuang Lab: (0311)85376660  
Xian Lab: (029)89608785  
Huhehaote Lab: (0471)3450025  
Hangzhou Lab: (0571)87219096  
Ningbo Lab: (0574)87736499  
Wuhan Lab: (027)83997127  
Hefei Lab: (0551)63843474  
Guangzhou Lab: (020)89224310  
Xiamen Lab: (0592)5568048  
Chengdu Lab: (028)87702708



扫二维码  
关注谱尼测试



Pony Testing International Group

## Test Report

NO.: BNC5DGUL47172744

Date: 2019.01.29

Page 7 of 33

Test Result (Unit: mg/kg)

Sample No.: L41307704

Sample Name: Sleeve

Supplier Name: Suzhou Industrial Park World Electronic Co.,Ltd.

Test Item	MDL	Test Result	RoHS Limit
Lead (Pb)	1	N.D.	1000
Cadmium (Cd)	1	N.D.	100
Mercury (Hg)	1	N.D.	1000
Hexavalent Chromium (Cr <sup>6+</sup> )	8	N.D.	1000
Sum of PBBs	—	N.D.	1000
Bromobiphenyl	5	N.D.	—
Dibromobiphenyl	5	N.D.	—
Tribromobiphenyl	5	N.D.	—
Tetrabromobiphenyl	5	N.D.	—
Pentabromobiphenyl	5	N.D.	—
Hexabromobiphenyl	5	N.D.	—
Heptabromobiphenyl	5	N.D.	—
Octabromobiphenyl	5	N.D.	—
Nonabromobiphenyl	5	N.D.	—
Decabromobiphenyl	5	N.D.	—
Sum of PBDEs	—	N.D.	1000
Bromodiphenyl ether	5	N.D.	—
Dibromodiphenyl ether	5	N.D.	—
Tribromodiphenyl ether	5	N.D.	—
Tetrabromodiphenyl ether	5	N.D.	—
Pentabromodiphenyl ether	5	N.D.	—
Hexabromodiphenyl ether	5	N.D.	—
Heptabromodiphenyl ether	5	N.D.	—
Octabromodiphenyl ether	5	N.D.	—
Nonabromodiphenyl ether	5	N.D.	—
Decabromodiphenyl ether	5	N.D.	—

The page below is blank



©Hotline 400-819-5688 www.ponytest.com

Pony Testing International Group Shanghai Co., Ltd.  
Company Address: No.35, 680, Gui Ping Road, Xuhui District, Shanghai

Beijing Lab: (010)83055000  
Shanghai Lab: (021)64851999  
Qingdao Lab: (0532)88706866  
Shenzhen Lab: (0755)26050909  
Tianjin Lab: (022)27360730  
Suzhou Lab: (0512)62997900  
Changchun Lab: (0431)85150908  
Dalian Lab: (0411)87336618  
Haerbin Lab: (0451)88104651  
Zhengzhou Lab: (0371)69350670  
Xinjiang Lab: (0991)6684186  
Shijiazhuang Lab: (0311)85376660  
Xian Lab: (029)89608785  
Huhehaote Lab: (0471)3450025  
Hangzhou Lab: (0571)87219096  
Ningbo Lab: (0574)87736499  
Wuhan Lab: (027)83997127  
Hefei Lab: (0551)63843474  
Guangzhou Lab: (020)89224310  
Xiamen Lab: (0592)5568048  
Chengdu Lab: (028)87702708





扫二维码  
关注谱尼测试



Pony Testing International Group

## Test Report

NO.: BNC5DGUL47172744

Date: 2019.01.29

Page 8 of 33

Test Result (Unit: mg/kg)

Sample No.: L41308704

Sample Name: Tape

Supplier Name: Jingjiang Jingyang Insulation Products Co., Ltd.

Test Item	MDL	Test Result	RoHS Limit
Lead (Pb)	1	N.D.	1000
Cadmium (Cd)	1	N.D.	100
Mercury (Hg)	1	N.D.	1000
Hexavalent Chromium (Cr <sup>6+</sup> )	8	N.D.	1000
Sum of PBBs	—	N.D.	1000
Bromobiphenyl	5	N.D.	—
Dibromobiphenyl	5	N.D.	—
Tribromobiphenyl	5	N.D.	—
Tetrabromobiphenyl	5	N.D.	—
Pentabromobiphenyl	5	N.D.	—
Hexabromobiphenyl	5	N.D.	—
Heptabromobiphenyl	5	N.D.	—
Octabromobiphenyl	5	N.D.	—
Nonabromobiphenyl	5	N.D.	—
Decabromobiphenyl	5	N.D.	—
Sum of PBDEs	—	N.D.	1000
Bromodiphenyl ether	5	N.D.	—
Dibromodiphenyl ether	5	N.D.	—
Tribromodiphenyl ether	5	N.D.	—
Tetrabromodiphenyl ether	5	N.D.	—
Pentabromodiphenyl ether	5	N.D.	—
Hexabromodiphenyl ether	5	N.D.	—
Heptabromodiphenyl ether	5	N.D.	—
Octabromodiphenyl ether	5	N.D.	—
Nonabromodiphenyl ether	5	N.D.	—
Decabromodiphenyl ether	5	N.D.	—

The page below is blank



©Hotline 400-819-5688 www.ponytest.com

Pony Testing International Group Shanghai Co., Ltd.  
Company Address: No.35, 680, Gui Ping Road, Xuhui District, Shanghai

Beijing Lab: (010)83055000  
Shanghai Lab: (021)64851999  
Qingdao Lab: (0532)88706866  
Shenzhen Lab: (0755)26050909  
Tianjin Lab: (022)27360730  
Suzhou Lab: (0512)62997900  
Changchun Lab: (0431)85150908  
Dalian Lab: (0411)87336618  
Haerbin Lab: (0451)88104651  
Zhengzhou Lab: (0371)69350670  
Xinjiang Lab: (0991)6684186  
Shijiazhuang Lab: (0311)85376660  
Xian Lab: (029)89608785  
Huhehaote Lab: (0471)3450025  
Hangzhou Lab: (0571)87219096  
Ningbo Lab: (0574)87736499  
Wuhan Lab: (027)83997127  
Hefei Lab: (0551)63843474  
Guangzhou Lab: (020)89224310  
Xiamen Lab: (0592)5568048  
Chengdu Lab: (028)87702708



扫二维码  
关注谱尼测试



Pony Testing International Group

## Test Report

NO.: BNC5DGUL47172744

Date: 2019.01.29

Page 9 of 33

Test Result (Unit: mg/kg)

Sample No.: L41309704

Sample Name: Insulation paper

Supplier Name: Wuxi Jinyu Electronic Material Co.,Ltd.

Test Item	MDL	Test Result	RoHS Limit
Lead (Pb)	1	N.D.	1000
Cadmium (Cd)	1	N.D.	100
Mercury (Hg)	1	N.D.	1000
Hexavalent Chromium (Cr <sup>6+</sup> )	8	N.D.	1000
Sum of PBBs	—	N.D.	1000
Bromobiphenyl	5	N.D.	—
Dibromobiphenyl	5	N.D.	—
Tribromobiphenyl	5	N.D.	—
Tetrabromobiphenyl	5	N.D.	—
Pentabromobiphenyl	5	N.D.	—
Hexabromobiphenyl	5	N.D.	—
Heptabromobiphenyl	5	N.D.	—
Octabromobiphenyl	5	N.D.	—
Nonabromobiphenyl	5	N.D.	—
Decabromobiphenyl	5	N.D.	—
Sum of PBDEs	—	N.D.	1000
Bromodiphenyl ether	5	N.D.	—
Dibromodiphenyl ether	5	N.D.	—
Tribromodiphenyl ether	5	N.D.	—
Tetrabromodiphenyl ether	5	N.D.	—
Pentabromodiphenyl ether	5	N.D.	—
Hexabromodiphenyl ether	5	N.D.	—
Heptabromodiphenyl ether	5	N.D.	—
Octabromodiphenyl ether	5	N.D.	—
Nonabromodiphenyl ether	5	N.D.	—
Decabromodiphenyl ether	5	N.D.	—

The page below is blank



©Hotline 400-819-5688 www.ponytest.com

Pony Testing International Group Shanghai Co., Ltd.  
Company Address: No.35, 680, Gui Ping Road, Xuhui District, Shanghai

Beijing Lab: (010)83055000  
Shanghai Lab: (021)64851999  
Qingdao Lab: (0532)88706866  
Shenzhen Lab: (0755)26050909  
Tianjin Lab: (022)27360730  
Suzhou Lab: (0512)62997900  
Changchun Lab: (0431)85150908  
Dalian Lab: (0411)87336618  
Haerbin Lab: (0451)88104651  
Zhengzhou Lab: (0371)69350670  
Xinjiang Lab: (0991)6684186  
Shijiazhuang Lab: (0311)85376660  
Xian Lab: (029)89608785  
Huhehaote Lab: (0471)3450025  
Hangzhou Lab: (0571)87219096  
Ningbo Lab: (0574)87736499  
Wuhan Lab: (027)83997127  
Hefei Lab: (0551)63843474  
Guangzhou Lab: (020)89224310  
Xiamen Lab: (0592)5568048  
Chengdu Lab: (028)87702708



扫二维码  
关注谱尼测试



Pony Testing International Group

## Test Report

NO.: BNC5DGUL47172744

Date: 2019.01.29

Page 10 of 33

Test Result (Unit: mg/kg)

Sample No.: L41310704

Sample Name: PU resin

Supplier Name: Wuxi East-Grace Electronic Material Technology Co., Ltd.

Test Item	MDL	Test Result	RoHS Limit
Lead (Pb)	1	N.D.	1000
Cadmium (Cd)	1	N.D.	100
Mercury (Hg)	1	N.D.	1000
Hexavalent Chromium (Cr <sup>6+</sup> )	8	N.D.	1000
Sum of PBBs	—	N.D.	1000
Bromobiphenyl	5	N.D.	—
Dibromobiphenyl	5	N.D.	—
Tribromobiphenyl	5	N.D.	—
Tetrabromobiphenyl	5	N.D.	—
Pentabromobiphenyl	5	N.D.	—
Hexabromobiphenyl	5	N.D.	—
Heptabromobiphenyl	5	N.D.	—
Octabromobiphenyl	5	N.D.	—
Nonabromobiphenyl	5	N.D.	—
Decabromobiphenyl	5	N.D.	—
Sum of PBDEs	—	N.D.	1000
Bromodiphenyl ether	5	N.D.	—
Dibromodiphenyl ether	5	N.D.	—
Tribromodiphenyl ether	5	N.D.	—
Tetrabromodiphenyl ether	5	N.D.	—
Pentabromodiphenyl ether	5	N.D.	—
Hexabromodiphenyl ether	5	N.D.	—
Heptabromodiphenyl ether	5	N.D.	—
Octabromodiphenyl ether	5	N.D.	—
Nonabromodiphenyl ether	5	N.D.	—
Decabromodiphenyl ether	5	N.D.	—

The page below is blank



©Hotline 400-819-5688 www.ponytest.com

Pony Testing International Group Shanghai Co., Ltd.  
Company Address: No.35, 680, Gui Ping Road, Xuhui District, Shanghai

Beijing Lab: (010)83055000  
Shanghai Lab: (021)64851999  
Qingdao Lab: (0532)88706866  
Shenzhen Lab: (0755)26050909  
Tianjin Lab: (022)27360730  
Suzhou Lab: (0512)62997900  
Changchun Lab: (0431)85150908  
Dalian Lab: (0411)87336618  
Haerbin Lab: (0451)88104651  
Zhengzhou Lab: (0371)69350670  
Xinjiang Lab: (0991)6684186  
Shijiazhuang Lab: (0311)85376660  
Xian Lab: (029)89608785  
Huhehaote Lab: (0471)3450025  
Hangzhou Lab: (0571)87219096  
Ningbo Lab: (0574)87736499  
Wuhan Lab: (027)83997127  
Hefei Lab: (0551)63843474  
Guangzhou Lab: (020)89224310  
Xiamen Lab: (0592)5568048  
Chengdu Lab: (028)87702708





扫二维码  
关注谱尼测试



Pony Testing International Group

## Test Report

NO.: BNC5DGUL47172744

Date: 2019.01.29

Page 11 of 33

Test Result (Unit: mg/kg)

Sample No.: L41311704

Sample Name: PU resin

Supplier Name: Wuxi East-Grace Electronic Material Technology Co., Ltd.

Test Item	MDL	Test Result	RoHS Limit
Lead (Pb)	1	N.D.	1000
Cadmium (Cd)	1	N.D.	100
Mercury (Hg)	1	N.D.	1000
Hexavalent Chromium (Cr <sup>6+</sup> )	8	N.D.	1000
Sum of PBBs	—	N.D.	1000
Bromobiphenyl	5	N.D.	—
Dibromobiphenyl	5	N.D.	—
Tribromobiphenyl	5	N.D.	—
Tetrabromobiphenyl	5	N.D.	—
Pentabromobiphenyl	5	N.D.	—
Hexabromobiphenyl	5	N.D.	—
Heptabromobiphenyl	5	N.D.	—
Octabromobiphenyl	5	N.D.	—
Nonabromobiphenyl	5	N.D.	—
Decabromobiphenyl	5	N.D.	—
Sum of PBDEs	—	N.D.	1000
Bromodiphenyl ether	5	N.D.	—
Dibromodiphenyl ether	5	N.D.	—
Tribromodiphenyl ether	5	N.D.	—
Tetrabromodiphenyl ether	5	N.D.	—
Pentabromodiphenyl ether	5	N.D.	—
Hexabromodiphenyl ether	5	N.D.	—
Heptabromodiphenyl ether	5	N.D.	—
Octabromodiphenyl ether	5	N.D.	—
Nonabromodiphenyl ether	5	N.D.	—
Decabromodiphenyl ether	5	N.D.	—

The page below is blank



©Hotline 400-819-5688 www.ponytest.com

Pony Testing International Group Shanghai Co., Ltd.  
Company Address: No.35, 680, Gui Ping Road, Xuhui District, Shanghai

Beijing Lab: (010)83055000  
Shanghai Lab: (021)64851999  
Qingdao Lab: (0532)88706866  
Shenzhen Lab: (0755)26050909  
Tianjin Lab: (022)27360730  
Suzhou Lab: (0512)62997900  
Changchun Lab: (0431)85150908  
Dalian Lab: (0411)87336618  
Haerbin Lab: (0451)88104651  
Zhengzhou Lab: (0371)69350670  
Xinjiang Lab: (0991)6684186  
Shijiazhuang Lab: (0311)85376660  
Xian Lab: (029)89608785  
Huhehaote Lab: (0471)3450025  
Hangzhou Lab: (0571)87219096  
Ningbo Lab: (0574)87736499  
Wuhan Lab: (027)83997127  
Hefei Lab: (0551)63843474  
Guangzhou Lab: (020)89224310  
Xiamen Lab: (0592)5568048  
Chengdu Lab: (028)87702708



扫二维码  
关注谱尼测试



Pony Testing International Group

## Test Report

NO.: BNC5DGUL47172744

Date: 2019.01.29

Page 12 of 33

Test Result (Unit: mg/kg)

Sample No.: L41318704

Sample Name: Deck

Supplier Name: Zhejiang Zhongze Electric Co., Ltd.

Test Item	MDL	Test Result	RoHS Limit
Lead (Pb)	1	N.D.	1000
Cadmium (Cd)	1	N.D.	100
Mercury (Hg)	1	N.D.	1000
Hexavalent Chromium (Cr <sup>6+</sup> )	8	N.D.	1000
Sum of PBBs	—	N.D.	1000
Bromobiphenyl	5	N.D.	—
Dibromobiphenyl	5	N.D.	—
Tribromobiphenyl	5	N.D.	—
Tetrabromobiphenyl	5	N.D.	—
Pentabromobiphenyl	5	N.D.	—
Hexabromobiphenyl	5	N.D.	—
Heptabromobiphenyl	5	N.D.	—
Octabromobiphenyl	5	N.D.	—
Nonabromobiphenyl	5	N.D.	—
Decabromobiphenyl	5	N.D.	—
Sum of PBDEs	—	N.D.	1000
Bromodiphenyl ether	5	N.D.	—
Dibromodiphenyl ether	5	N.D.	—
Tribromodiphenyl ether	5	N.D.	—
Tetrabromodiphenyl ether	5	N.D.	—
Pentabromodiphenyl ether	5	N.D.	—
Hexabromodiphenyl ether	5	N.D.	—
Heptabromodiphenyl ether	5	N.D.	—
Octabromodiphenyl ether	5	N.D.	—
Nonabromodiphenyl ether	5	N.D.	—
Decabromodiphenyl ether	5	N.D.	—

The page below is blank



©Hotline 400-819-5688 www.ponytest.com

Pony Testing International Group Shanghai Co., Ltd.  
Company Address: No.35, 680, Gui Ping Road, Xuhui District, Shanghai

Beijing Lab: (010)83055000  
Shanghai Lab: (021)64851999  
Qingdao Lab: (0532)88706866  
Shenzhen Lab: (0755)26050909  
Tianjin Lab: (022)27360730  
Suzhou Lab: (0512)62997900  
Changchun Lab: (0431)85150908  
Dalian Lab: (0411)87336618  
Haerbin Lab: (0451)88104651  
Zhengzhou Lab: (0371)69350670  
Xinjiang Lab: (0991)6684186  
Shijiazhuang Lab: (0311)85376660  
Xian Lab: (029)89608785  
Huhehaote Lab: (0471)3450025  
Hangzhou Lab: (0571)87219096  
Ningbo Lab: (0574)87736499  
Wuhan Lab: (027)83997127  
Hefei Lab: (0551)63843474  
Guangzhou Lab: (020)89224310  
Xiamen Lab: (0592)5568048  
Chengdu Lab: (028)87702708



扫二维码  
关注谱尼测试



Pony Testing International Group

## Test Report

NO.: BNC5DGUL47172744

Date: 2019.01.29

Page 13 of 33

Test Result (Unit: mg/kg)

Sample No.: L41319704

Sample Name: Deck

Supplier Name: Nantong Topparts Electronic Material Co.,Ltd.

Test Item	MDL	Test Result	RoHS Limit
Lead (Pb)	1	N.D.	1000
Cadmium (Cd)	1	N.D.	100
Mercury (Hg)	1	N.D.	1000
Hexavalent Chromium (Cr <sup>6+</sup> )	8	N.D.	1000
Sum of PBBs	—	N.D.	1000
Bromobiphenyl	5	N.D.	—
Dibromobiphenyl	5	N.D.	—
Tribromobiphenyl	5	N.D.	—
Tetrabromobiphenyl	5	N.D.	—
Pentabromobiphenyl	5	N.D.	—
Hexabromobiphenyl	5	N.D.	—
Heptabromobiphenyl	5	N.D.	—
Octabromobiphenyl	5	N.D.	—
Nonabromobiphenyl	5	N.D.	—
Decabromobiphenyl	5	N.D.	—
Sum of PBDEs	—	N.D.	1000
Bromodiphenyl ether	5	N.D.	—
Dibromodiphenyl ether	5	N.D.	—
Tribromodiphenyl ether	5	N.D.	—
Tetrabromodiphenyl ether	5	N.D.	—
Pentabromodiphenyl ether	5	N.D.	—
Hexabromodiphenyl ether	5	N.D.	—
Heptabromodiphenyl ether	5	N.D.	—
Octabromodiphenyl ether	5	N.D.	—
Nonabromodiphenyl ether	5	N.D.	—
Decabromodiphenyl ether	5	N.D.	—

The page below is blank



©Hotline 400-819-5688 www.ponytest.com

Pony Testing International Group Shanghai Co., Ltd.  
Company Address: No.35, 680, Gui Ping Road, Xuhui District, Shanghai

Beijing Lab: (010)83055000  
Shanghai Lab: (021)64851999  
Qingdao Lab: (0532)88706866  
Shenzhen Lab: (0755)26050909  
Tianjin Lab: (022)27360730  
Suzhou Lab: (0512)62997900  
Changchun Lab: (0431)85150908  
Dalian Lab: (0411)87336618  
Haerbin Lab: (0451)88104651  
Zhengzhou Lab: (0371)69350670  
Xinjiang Lab: (0991)6684186  
Shijiazhuang Lab: (0311)85376660  
Xian Lab: (029)89608785  
Huhehaote Lab: (0471)3450025  
Hangzhou Lab: (0571)87219096  
Ningbo Lab: (0574)87736499  
Wuhan Lab: (027)83997127  
Hefei Lab: (0551)63843474  
Guangzhou Lab: (020)89224310  
Xiamen Lab: (0592)5568048  
Chengdu Lab: (028)87702708





扫二维码  
关注谱尼测试



Pony Testing International Group

## Test Report

NO.: BNC5DGUL47172744

Date: 2019.01.29

Page 14 of 33

Test Result (Unit: mg/kg)

Sample No.: L41320704

Sample Name: Deck

Supplier Name: Nangtong Xinyin Plastic Co., Ltd.

Test Item	MDL	Test Result	RoHS Limit
Lead (Pb)	1	N.D.	1000
Cadmium (Cd)	1	N.D.	100
Mercury (Hg)	1	N.D.	1000
Hexavalent Chromium (Cr <sup>6+</sup> )	8	N.D.	1000
Sum of PBBs	—	N.D.	1000
Bromobiphenyl	5	N.D.	—
Dibromobiphenyl	5	N.D.	—
Tribromobiphenyl	5	N.D.	—
Tetrabromobiphenyl	5	N.D.	—
Pentabromobiphenyl	5	N.D.	—
Hexabromobiphenyl	5	N.D.	—
Heptabromobiphenyl	5	N.D.	—
Octabromobiphenyl	5	N.D.	—
Nonabromobiphenyl	5	N.D.	—
Decabromobiphenyl	5	N.D.	—
Sum of PBDEs	—	N.D.	1000
Bromodiphenyl ether	5	N.D.	—
Dibromodiphenyl ether	5	N.D.	—
Tribromodiphenyl ether	5	N.D.	—
Tetrabromodiphenyl ether	5	N.D.	—
Pentabromodiphenyl ether	5	N.D.	—
Hexabromodiphenyl ether	5	N.D.	—
Heptabromodiphenyl ether	5	N.D.	—
Octabromodiphenyl ether	5	N.D.	—
Nonabromodiphenyl ether	5	N.D.	—
Decabromodiphenyl ether	5	N.D.	—

The page below is blank



©Hotline 400-819-5688 www.ponytest.com

Pony Testing International Group Shanghai Co., Ltd.  
Company Address: No.35, 680, Gui Ping Road, Xuhui District, Shanghai

Beijing Lab: (010)83055000  
Shanghai Lab: (021)64851999  
Qingdao Lab: (0532)88706866  
Shenzhen Lab: (0755)26050909  
Tianjin Lab: (022)27360730  
Suzhou Lab: (0512)62997900  
Changchun Lab: (0431)85150908  
Dalian Lab: (0411)87336618  
Haerbin Lab: (0451)88104651  
Zhengzhou Lab: (0371)69350670  
Xinjiang Lab: (0991)6684186  
Shijiazhuang Lab: (0311)85376660  
Xian Lab: (029)89608785  
Huhehaote Lab: (0471)3450025  
Hangzhou Lab: (0571)87219096  
Ningbo Lab: (0574)87736499  
Wuhan Lab: (027)83997127  
Hefei Lab: (0551)63843474  
Guangzhou Lab: (020)89224310  
Xiamen Lab: (0592)5568048  
Chengdu Lab: (028)87702708



扫二维码  
关注谱尼测试



Pony Testing International Group

## Test Report

NO.: BNC5DGUL47172744

Date: 2019.01.29

Page 15 of 33

Test Result (Unit: mg/kg)

Sample No.: L41321704

Sample Name: Deck

Supplier Name: Nantong Yuanrun Plastic Products Co., Ltd.

Test Item	MDL	Test Result	RoHS Limit
Lead (Pb)	1	N.D.	1000
Cadmium (Cd)	1	N.D.	100
Mercury (Hg)	1	N.D.	1000
Hexavalent Chromium (Cr <sup>6+</sup> )	8	N.D.	1000
Sum of PBBs	—	N.D.	1000
Bromobiphenyl	5	N.D.	—
Dibromobiphenyl	5	N.D.	—
Tribromobiphenyl	5	N.D.	—
Tetrabromobiphenyl	5	N.D.	—
Pentabromobiphenyl	5	N.D.	—
Hexabromobiphenyl	5	N.D.	—
Heptabromobiphenyl	5	N.D.	—
Octabromobiphenyl	5	N.D.	—
Nonabromobiphenyl	5	N.D.	—
Decabromobiphenyl	5	N.D.	—
Sum of PBDEs	—	N.D.	1000
Bromodiphenyl ether	5	N.D.	—
Dibromodiphenyl ether	5	N.D.	—
Tribromodiphenyl ether	5	N.D.	—
Tetrabromodiphenyl ether	5	N.D.	—
Pentabromodiphenyl ether	5	N.D.	—
Hexabromodiphenyl ether	5	N.D.	—
Heptabromodiphenyl ether	5	N.D.	—
Octabromodiphenyl ether	5	N.D.	—
Nonabromodiphenyl ether	5	N.D.	—
Decabromodiphenyl ether	5	N.D.	—

The page below is blank



©Hotline 400-819-5688 www.ponytest.com

Pony Testing International Group Shanghai Co., Ltd.  
Company Address: No.35, 680, Gui Ping Road, Xuhui District, Shanghai

Beijing Lab: (010)83055000  
Shanghai Lab: (021)64851999  
Qingdao Lab: (0532)88706866  
Shenzhen Lab: (0755)26050909  
Tianjin Lab: (022)27360730  
Suzhou Lab: (0512)62997900  
Changchun Lab: (0431)85150908  
Dalian Lab: (0411)87336618  
Haerbin Lab: (0451)88104651  
Zhengzhou Lab: (0371)69350670  
Xinjiang Lab: (0991)6684186  
Shijiazhuang Lab: (0311)85376660  
Xian Lab: (029)89608785  
Huhehaote Lab: (0471)3450025  
Hangzhou Lab: (0571)87219096  
Ningbo Lab: (0574)87736499  
Wuhan Lab: (027)83997127  
Hefei Lab: (0551)63843474  
Guangzhou Lab: (020)89224310  
Xiamen Lab: (0592)5568048  
Chengdu Lab: (028)87702708



扫二维码  
关注谱尼测试



Pony Testing International Group

## Test Report

NO.: BNC5DGUL47172744

Date: 2019.01.29

Page 16 of 33

Test Result (Unit: mg/kg)

Sample No.: L41322704

Sample Name: Tag paper

Supplier Name: Shenzhen Zhongsheng Color Printing Co., Ltd.

Test Item	MDL	Test Result	RoHS Limit
Lead (Pb)	1	N.D.	1000
Cadmium (Cd)	1	N.D.	100
Mercury (Hg)	1	N.D.	1000
Hexavalent Chromium (Cr <sup>6+</sup> )	8	N.D.	1000
Sum of PBBs	—	N.D.	1000
Bromobiphenyl	5	N.D.	—
Dibromobiphenyl	5	N.D.	—
Tribromobiphenyl	5	N.D.	—
Tetrabromobiphenyl	5	N.D.	—
Pentabromobiphenyl	5	N.D.	—
Hexabromobiphenyl	5	N.D.	—
Heptabromobiphenyl	5	N.D.	—
Octabromobiphenyl	5	N.D.	—
Nonabromobiphenyl	5	N.D.	—
Decabromobiphenyl	5	N.D.	—
Sum of PBDEs	—	N.D.	1000
Bromodiphenyl ether	5	N.D.	—
Dibromodiphenyl ether	5	N.D.	—
Tribromodiphenyl ether	5	N.D.	—
Tetrabromodiphenyl ether	5	N.D.	—
Pentabromodiphenyl ether	5	N.D.	—
Hexabromodiphenyl ether	5	N.D.	—
Heptabromodiphenyl ether	5	N.D.	—
Octabromodiphenyl ether	5	N.D.	—
Nonabromodiphenyl ether	5	N.D.	—
Decabromodiphenyl ether	5	N.D.	—

The page below is blank



©Hotline 400-819-5688 www.ponytest.com

Pony Testing International Group Shanghai Co., Ltd.  
Company Address: No.35, 680, Gui Ping Road, Xuhui District, Shanghai

Beijing Lab: (010)83055000  
Shanghai Lab: (021)64851999  
Qingdao Lab: (0532)88706866  
Shenzhen Lab: (0755)26050909  
Tianjin Lab: (022)27360730  
Suzhou Lab: (0512)62997900  
Changchun Lab: (0431)85150908  
Dalian Lab: (0411)87336618  
Haerbin Lab: (0451)88104651  
Zhengzhou Lab: (0371)69350670  
Xinjiang Lab: (0991)6684186  
Shijiazhuang Lab: (0311)85376660  
Xian Lab: (029)89608785  
Huhehaote Lab: (0471)3450025  
Hangzhou Lab: (0571)87219096  
Ningbo Lab: (0574)87736499  
Wuhan Lab: (027)83997127  
Hefei Lab: (0551)63843474  
Guangzhou Lab: (020)89224310  
Xiamen Lab: (0592)5568048  
Chengdu Lab: (028)87702708





扫二维码  
关注谱尼测试



Pony Testing International Group

## Test Report

NO.: BNC5DGUL47172744

Date: 2019.01.29

Page 17 of 33

Test Result (Unit: mg/kg)

Sample No.: L41323704

Sample Name: Cover cover+Bridge (Mixed Test)

Supplier Name: Nantong Topparts Electronic Material Co.,Ltd.

Test Item	MDL	Test Result	RoHS Limit
Lead (Pb)	1	N.D.	1000
Cadmium (Cd)	1	N.D.	100
Mercury (Hg)	1	N.D.	1000
Hexavalent Chromium (Cr <sup>6+</sup> )	8	N.D.	1000
Sum of PBBs	—	N.D.	1000
Bromobiphenyl	5	N.D.	—
Dibromobiphenyl	5	N.D.	—
Tribromobiphenyl	5	N.D.	—
Tetrabromobiphenyl	5	N.D.	—
Pentabromobiphenyl	5	N.D.	—
Hexabromobiphenyl	5	N.D.	—
Heptabromobiphenyl	5	N.D.	—
Octabromobiphenyl	5	N.D.	—
Nonabromobiphenyl	5	N.D.	—
Decabromobiphenyl	5	N.D.	—
Sum of PBDEs	—	N.D.	1000
Bromodiphenyl ether	5	N.D.	—
Dibromodiphenyl ether	5	N.D.	—
Tribromodiphenyl ether	5	N.D.	—
Tetrabromodiphenyl ether	5	N.D.	—
Pentabromodiphenyl ether	5	N.D.	—
Hexabromodiphenyl ether	5	N.D.	—
Heptabromodiphenyl ether	5	N.D.	—
Octabromodiphenyl ether	5	N.D.	—
Nonabromodiphenyl ether	5	N.D.	—
Decabromodiphenyl ether	5	N.D.	—

The page below is blank



©Hotline 400-819-5688 www.ponytest.com

Pony Testing International Group Shanghai Co., Ltd.  
Company Address: No.35, 680, Gui Ping Road, Xuhui District, Shanghai

Beijing Lab: (010)83055000  
Shanghai Lab: (021)64851999  
Qingdao Lab: (0532)88706866  
Shenzhen Lab: (0755)26050909  
Tianjin Lab: (022)27360730  
Suzhou Lab: (0512)62997900  
Changchun Lab: (0431)85150908  
Dalian Lab: (0411)87336618  
Haerbin Lab: (0451)88104651  
Zhengzhou Lab: (0371)69350670  
Xinjiang Lab: (0991)6684186  
Shijiazhuang Lab: (0311)85376660  
Xian Lab: (029)89608785  
Huhehaote Lab: (0471)3450025  
Hangzhou Lab: (0571)87219096  
Ningbo Lab: (0574)87736499  
Wuhan Lab: (027)83997127  
Hefei Lab: (0551)63843474  
Guangzhou Lab: (020)89224310  
Xiamen Lab: (0592)5568048  
Chengdu Lab: (028)87702708



扫二维码  
关注谱尼测试



Pony Testing International Group

## Test Report

NO.: BNC5DGUL47172744

Date: 2019.01.29

Page 18 of 33

Test Result (Unit: mg/kg)

Sample No.: L41325704

Sample Name: Plastic nut + gasket(Mixed Test)

Supplier Name: Nantong Topparts Electronic Material Co.,Ltd.

Test Item	MDL	Test Result	RoHS Limit
Lead (Pb)	1	N.D.	1000
Cadmium (Cd)	1	N.D.	100
Mercury (Hg)	1	N.D.	1000
Hexavalent Chromium (Cr <sup>6+</sup> )	8	N.D.	1000
Sum of PBBs	—	N.D.	1000
Bromobiphenyl	5	N.D.	—
Dibromobiphenyl	5	N.D.	—
Tribromobiphenyl	5	N.D.	—
Tetrabromobiphenyl	5	N.D.	—
Pentabromobiphenyl	5	N.D.	—
Hexabromobiphenyl	5	N.D.	—
Heptabromobiphenyl	5	N.D.	—
Octabromobiphenyl	5	N.D.	—
Nonabromobiphenyl	5	N.D.	—
Decabromobiphenyl	5	N.D.	—
Sum of PBDEs	—	N.D.	1000
Bromodiphenyl ether	5	N.D.	—
Dibromodiphenyl ether	5	N.D.	—
Tribromodiphenyl ether	5	N.D.	—
Tetrabromodiphenyl ether	5	N.D.	—
Pentabromodiphenyl ether	5	N.D.	—
Hexabromodiphenyl ether	5	N.D.	—
Heptabromodiphenyl ether	5	N.D.	—
Octabromodiphenyl ether	5	N.D.	—
Nonabromodiphenyl ether	5	N.D.	—
Decabromodiphenyl ether	5	N.D.	—

The page below is blank



©Hotline 400-819-5688 www.ponytest.com

Pony Testing International Group Shanghai Co., Ltd.  
Company Address: No.35, 680, Gui Ping Road, Xuhui District, Shanghai

Beijing Lab: (010)83055000  
Shanghai Lab: (021)64851999  
Qingdao Lab: (0532)88706866  
Shenzhen Lab: (0755)26050909  
Tianjin Lab: (022)27360730  
Suzhou Lab: (0512)62997900  
Changchun Lab: (0431)85150908  
Dalian Lab: (0411)87336618  
Haerbin Lab: (0451)88104651  
Zhengzhou Lab: (0371)69350670  
Xinjiang Lab: (0991)6684186  
Shijiazhuang Lab: (0311)85376660  
Xian Lab: (029)89608785  
Huhehaote Lab: (0471)3450025  
Hangzhou Lab: (0571)87219096  
Ningbo Lab: (0574)87736499  
Wuhan Lab: (027)83997127  
Hefei Lab: (0551)63843474  
Guangzhou Lab: (020)89224310  
Xiamen Lab: (0592)5568048  
Chengdu Lab: (028)87702708



扫二维码  
关注谱尼测试



Pony Testing International Group

## Test Report

NO.: BNC5DGUL47172744

Date: 2019.01.29

Page 19 of 33

Test Results (Unit: mg/kg)

Sample No.: L41299704

Sample Name: Metallized film

Supplier Name: Guangdong Metalfilm Tech Co.,Ltd.

Test Item	CAS Number	MDL	Test Result	RoHS Limit
DEHP	117-81-7	30	N.D.	1000
DBP	84-74-2	30	N.D.	1000
BBP	85-68-7	30	N.D.	1000
DIBP	84-69-5	30	N.D.	1000

Test Result (Unit: mg/kg)

Sample No.: L41300704

Sample Name: Metallized film

Supplier Name: Zhejiang Nanyang Technology Joint-Stock Co.,Ltd.

Test Item	CAS Number	MDL	Test Result	RoHS Limit
DEHP	117-81-7	30	N.D.	1000
DBP	84-74-2	30	N.D.	1000
BBP	85-68-7	30	N.D.	1000
DIBP	84-69-5	30	N.D.	1000

Test Result (Unit: mg/kg)

Sample No.: L41301704

Sample Name: Plastic core

Supplier Name: Zhejiang Zhognze Electric Co., Ltd.

Test Item	CAS Number	MDL	Test Result	RoHS Limit
DEHP	117-81-7	30	N.D.	1000
DBP	84-74-2	30	N.D.	1000
BBP	85-68-7	30	N.D.	1000
DIBP	84-69-5	30	N.D.	1000

Test Result (Unit: mg/kg)

Sample No.: L41302704

Sample Name: Plastic core

Supplier Name: Nantong Yuanrun Plastic Products Co., Ltd.

Test Item	CAS Number	MDL	Test Result	RoHS Limit
DEHP	117-81-7	30	N.D.	1000
DBP	84-74-2	30	N.D.	1000
BBP	85-68-7	30	N.D.	1000
DIBP	84-69-5	30	N.D.	1000

The page below is blank



©Hotline 400-819-5688 www.ponytest.com

Pony Testing International Group Shanghai Co., Ltd.  
Company Address: No.35, 680, Gui Ping Road, Xuhui District, Shanghai

Beijing Lab: (010)83055000  
Shanghai Lab: (021)64851999  
Qingdao Lab: (0532)88706866  
Shenzhen Lab: (0755)26050909  
Tianjin Lab: (022)27360730  
Suzhou Lab: (0512)62997900  
Changchun Lab: (0431)85150908  
Dalian Lab: (0411)87336618  
Haerbin Lab: (0451)88104651  
Zhengzhou Lab: (0371)69350670  
Xinjiang Lab: (0991)6684186  
Shijiazhuang Lab: (0311)85376660  
Xian Lab: (029)89608785  
Huhehaote Lab: (0471)3450025  
Hangzhou Lab: (0571)87219096  
Ningbo Lab: (0574)87736499  
Wuhan Lab: (027)83997127  
Hefei Lab: (0551)63843474  
Guangzhou Lab: (020)89224310  
Xiamen Lab: (0592)5568048  
Chengdu Lab: (028)87702708





扫二维码  
关注谱尼测试



Pony Testing International Group

## Test Report

NO.: BNC5DGUL47172744

Date: 2019.01.29

Page 20 of 33

Test Result (Unit: mg/kg)

Sample No.: L41306704

Sample Name: Insulation cover

Supplier Name: Nangtong Xinyin Plastic Co., Ltd.

Test Item	CAS Number	MDL	Test Result	RoHS Limit
DEHP	117-81-7	30	N.D.	1000
DBP	84-74-2	30	N.D.	1000
BBP	85-68-7	30	N.D.	1000
DIBP	84-69-5	30	N.D.	1000

Test Result (Unit: mg/kg)

Sample No.: L41307704

Sample Name: Sleeve

Supplier Name: Suzhou Industrial Park World Electronic Co.,Ltd.

Test Item	CAS Number	MDL	Test Result	RoHS Limit
DEHP	117-81-7	30	N.D.	1000
DBP	84-74-2	30	N.D.	1000
BBP	85-68-7	30	N.D.	1000
DIBP	84-69-5	30	N.D.	1000

Test Result (Unit: mg/kg)

Sample No.: L41308704

Sample Name: Tape

Supplier Name: Jingjiang Jingyang Insulation Products Co., Ltd.

Test Item	CAS Number	MDL	Test Result	RoHS Limit
DEHP	117-81-7	30	N.D.	1000
DBP	84-74-2	30	N.D.	1000
BBP	85-68-7	30	N.D.	1000
DIBP	84-69-5	30	N.D.	1000

Test Result (Unit: mg/kg)

Sample No.: L41309704

Sample Name: Insulation paper

Supplier Name: Wuxi Jinyu Electronic Material Co.,Ltd.

Test Item	CAS Number	MDL	Test Result	RoHS Limit
DEHP	117-81-7	30	N.D.	1000
DBP	84-74-2	30	N.D.	1000
BBP	85-68-7	30	N.D.	1000
DIBP	84-69-5	30	N.D.	1000

The page below is blank



©Hotline 400-819-5688 www.ponytest.com

Pony Testing International Group Shanghai Co., Ltd.  
Company Address: No.35, 680, Gui Ping Road, Xuhui District, Shanghai

Beijing Lab: (010)83055000  
Shanghai Lab: (021)64851999  
Qingdao Lab: (0532)88706866  
Shenzhen Lab: (0755)26050909  
Tianjin Lab: (022)27360730  
Suzhou Lab: (0512)62997900  
Changchun Lab: (0431)85150908  
Dalian Lab: (0411)87336618  
Haerbin Lab: (0451)88104651  
Zhengzhou Lab: (0371)69350670  
Xinjiang Lab: (0991)6684186  
Shijiazhuang Lab: (0311)85376660  
Xian Lab: (029)89608785  
Huhehaote Lab: (0471)3450025  
Hangzhou Lab: (0571)87219096  
Ningbo Lab: (0574)87736499  
Wuhan Lab: (027)83997127  
Hefei Lab: (0551)63843474  
Guangzhou Lab: (020)89224310  
Xiamen Lab: (0592)5568048  
Chengdu Lab: (028)87702708



扫二维码  
关注谱尼测试



Pony Testing International Group

## Test Report

NO.: BNC5DGUL47172744

Date: 2019.01.29

Page 21 of 33

Test Result (Unit: mg/kg)

Sample No.: L41310704

Sample Name: PU resin

Supplier Name: Wuxi East-Grace Electronic Material Technology Co., Ltd.

Test Item	CAS Number	MDL	Test Result	RoHS Limit
DEHP	117-81-7	30	N.D.	1000
DBP	84-74-2	30	N.D.	1000
BBP	85-68-7	30	N.D.	1000
DIBP	84-69-5	30	N.D.	1000

Test Result (Unit: mg/kg)

Sample No.: L41311704

Sample Name: PU resin

Supplier Name: Wuxi East-Grace Electronic Material Technology Co., Ltd.

Test Item	CAS Number	MDL	Test Result	RoHS Limit
DEHP	117-81-7	30	N.D.	1000
DBP	84-74-2	30	N.D.	1000
BBP	85-68-7	30	N.D.	1000
DIBP	84-69-5	30	N.D.	1000

Test Result (Unit: mg/kg)

Sample No.: L41318704

Sample Name: Deck

Supplier Name: Zhejiang Zhongze Electric Co., Ltd.

Test Item	CAS Number	MDL	Test Result	RoHS Limit
DEHP	117-81-7	30	N.D.	1000
DBP	84-74-2	30	N.D.	1000
BBP	85-68-7	30	N.D.	1000
DIBP	84-69-5	30	N.D.	1000

Test Result (Unit: mg/kg)

Sample No.: L41319704

Sample Name: Deck

Supplier Name: Nantong Topparts Electronic Material Co., Ltd.

Test Item	CAS Number	MDL	Test Result	RoHS Limit
DEHP	117-81-7	30	N.D.	1000
DBP	84-74-2	30	N.D.	1000
BBP	85-68-7	30	N.D.	1000
DIBP	84-69-5	30	N.D.	1000

The page below is blank



©Hotline 400-819-5688 www.ponytest.com

Pony Testing International Group Shanghai Co., Ltd.  
Company Address: No.35, 680, Gui Ping Road, Xuhui District, Shanghai

Beijing Lab: (010)83055000  
Shanghai Lab: (021)64851999  
Qingdao Lab: (0532)88706866  
Shenzhen Lab: (0755)26050909  
Tianjin Lab: (022)27360730  
Suzhou Lab: (0512)62997900  
Changchun Lab: (0431)85150908  
Dalian Lab: (0411)87336618  
Haerbin Lab: (0451)88104651  
Zhengzhou Lab: (0371)69350670  
Xinjiang Lab: (0991)6684186  
Shijiazhuang Lab: (0311)85376660  
Xian Lab: (029)89608785  
Huhehaote Lab: (0471)3450025  
Hangzhou Lab: (0571)87219096  
Ningbo Lab: (0574)87736499  
Wuhan Lab: (027)83997127  
Hefei Lab: (0551)63843474  
Guangzhou Lab: (020)89224310  
Xiamen Lab: (0592)5568048  
Chengdu Lab: (028)87702708





扫二维码  
关注谱尼测试



Pony Testing International Group

## Test Report

NO.: BNC5DGUL47172744

Date: 2019.01.29

Page 22 of 33

Test Result (Unit: mg/kg)

Sample No.: L41320704

Sample Name: Deck

Supplier Name: Nangtong Xinyin Plastic Co., Ltd.

Test Item	CAS Number	MDL	Test Result	RoHS Limit
DEHP	117-81-7	30	N.D.	1000
DBP	84-74-2	30	N.D.	1000
BBP	85-68-7	30	N.D.	1000
DIBP	84-69-5	30	N.D.	1000

Test Result (Unit: mg/kg)

Sample No.: L41321704

Sample Name: Deck

Supplier Name: Nantong Yuanrun Plastic Products Co., Ltd.

Test Item	CAS Number	MDL	Test Result	RoHS Limit
DEHP	117-81-7	30	N.D.	1000
DBP	84-74-2	30	N.D.	1000
BBP	85-68-7	30	N.D.	1000
DIBP	84-69-5	30	N.D.	1000

Test Result (Unit: mg/kg)

Sample No.: L41322704

Sample Name: Tag paper

Supplier Name: Shenzhen Zhongsheng Color Printing Co., Ltd.

Test Item	CAS Number	MDL	Test Result	RoHS Limit
DEHP	117-81-7	30	N.D.	1000
DBP	84-74-2	30	N.D.	1000
BBP	85-68-7	30	N.D.	1000
DIBP	84-69-5	30	N.D.	1000

Test Result (Unit: mg/kg)

Sample No.: L41323704

Sample Name: Cover cover+Bridge(Mixed Test)

Supplier Name: Nantong Topparts Electronic Material Co.,Ltd.

Test Item	CAS Number	MDL	Test Result	RoHS Limit
DEHP	117-81-7	30	N.D.	1000
DBP	84-74-2	30	N.D.	1000
BBP	85-68-7	30	N.D.	1000
DIBP	84-69-5	30	N.D.	1000

The page below is blank



©Hotline 400-819-5688 www.ponytest.com

Pony Testing International Group Shanghai Co., Ltd.  
Company Address: No.35, 680, Gui Ping Road, Xuhui District, Shanghai

Beijing Lab: (010)83055000  
Shanghai Lab: (021)64851999  
Qingdao Lab: (0532)88706866  
Shenzhen Lab: (0755)26050909  
Tianjin Lab: (022)27360730  
Suzhou Lab: (0512)62997900  
Changchun Lab: (0431)85150908  
Dalian Lab: (0411)87336618  
Haerbin Lab: (0451)88104651  
Zhengzhou Lab: (0371)69350670  
Xinjiang Lab: (0991)6684186  
Shijiazhuang Lab: (0311)85376660  
Xian Lab: (029)89608785  
Huhehaote Lab: (0471)3450025  
Hangzhou Lab: (0571)87219096  
Ningbo Lab: (0574)87736499  
Wuhan Lab: (027)83997127  
Hefei Lab: (0551)63843474  
Guangzhou Lab: (020)89224310  
Xiamen Lab: (0592)5568048  
Chengdu Lab: (028)87702708





扫二维码  
关注谱尼测试



Pony Testing International Group

## Test Report

NO.: BNC5DGUL47172744

Date: 2019.01.29

Page 23 of 33

Test Result (Unit: mg/kg)

Sample No.: L41325704

Sample Name: Plastic nut + gasket(Mixed Test)

Supplier Name: Nantong Topparts Electronic Material Co.,Ltd.

Test Item	CAS Number	MDL	Test Result	RoHS Limit
DEHP	117-81-7	30	N.D.	1000
DBP	84-74-2	30	N.D.	1000
BBP	85-68-7	30	N.D.	1000
DIBP	84-69-5	30	N.D.	1000

Test Results (Unit: mg/kg)

Sample No.: L41303704

Sample Name: Metal sprayed electrode

Supplier Name: Shaoxing Tianlong Tin Materials Co.,Ltd.

Test Item	MDL	Test Result	RoHS Limit
Lead (Pb)	1	22	1000
Cadmium (Cd)	1	N.D.	100
Mercury (Hg)	1	N.D.	1000
Hexavalent Chromium (Cr <sup>6+</sup> )	See Note (6)	Negative	—

Test Results (Unit: mg/kg)

Sample No.: L41304704

Sample Name: Metal sprayed electrode

Supplier Name: Shaoxing Tianlong Tin Materials Co.,Ltd.

Test Item	MDL	Test Result	RoHS Limit
Lead (Pb)	1	26	1000
Cadmium (Cd)	1	N.D.	100
Mercury (Hg)	1	N.D.	1000
Hexavalent Chromium (Cr <sup>6+</sup> )	See Note (6)	Negative	—

Test Results (Unit: mg/kg)

Sample No.: L41305704

Sample Name: Connection electrode

Supplier Name: Nantong Xinxun Electronics Co., Ltd.

Test Item	MDL	Test Result	RoHS Limit
Lead (Pb)	1	N.D.	1000
Cadmium (Cd)	1	N.D.	100
Mercury (Hg)	1	N.D.	1000
Hexavalent Chromium (Cr <sup>6+</sup> )	See Note (6)	Negative	—

The page below is blank



©Hotline 400-819-5688 www.ponytest.com

Pony Testing International Group Shanghai Co., Ltd.  
Company Address: No.35, 680, Gui Ping Road, Xuhui District, Shanghai

Beijing Lab: (010)83055000  
Shanghai Lab: (021)64851999  
Qingdao Lab: (0532)88706866  
Shenzhen Lab: (0755)26050909  
Tianjin Lab: (022)27360730  
Suzhou Lab: (0512)62997900  
Changchun Lab: (0431)85150908  
Dalian Lab: (0411)87336618  
Haerbin Lab: (0451)88104651  
Zhengzhou Lab: (0371)69350670  
Xinjiang Lab: (0991)6684186  
Shijiazhuang Lab: (0311)85376660  
Xian Lab: (029)89608785  
Huhehaote Lab: (0471)3450025  
Hangzhou Lab: (0571)87219096  
Ningbo Lab: (0574)87736499  
Wuhan Lab: (027)83997127  
Hefei Lab: (0551)63843474  
Guangzhou Lab: (020)89224310  
Xiamen Lab: (0592)5568048  
Chengdu Lab: (028)87702708



扫二维码  
关注谱尼测试



Pony Testing International Group

## Test Report

NO.: BNC5DGUL47172744

Date: 2019.01.29

Page 24 of 33

Test Results (Unit: mg/kg)

Sample No.: L41312704

Sample Name: case

Supplier Name: Nantong Likang Electronic Machinery Co., Ltd.

Test Item	MDL	Test Result	RoHS Limit
Lead (Pb)	1	N.D.	1000
Cadmium (Cd)	1	N.D.	100
Mercury (Hg)	1	N.D.	1000
Hexavalent Chromium (Cr <sup>6+</sup> )	See Note (6)	Negative	—

Test Results (Unit: mg/kg)

Sample No.: L41313704

Sample Name: case

Supplier Name: Zhejiang Zhongze Electric Co., Ltd.

Test Item	MDL	Test Result	RoHS Limit
Lead (Pb)	1	N.D.	1000
Cadmium (Cd)	1	N.D.	100
Mercury (Hg)	1	N.D.	1000
Hexavalent Chromium (Cr <sup>6+</sup> )	See Note (6)	Negative	—

Test Results (Unit: mg/kg)

Sample No.: L41314704

Sample Name: case

Supplier Name: Nantong Chuangjia Electrical and Mechanical Co., Ltd.

Test Item	MDL	Test Result	RoHS Limit
Lead (Pb)	1	N.D.	1000
Cadmium (Cd)	1	N.D.	100
Mercury (Hg)	1	N.D.	1000
Hexavalent Chromium (Cr <sup>6+</sup> )	See Note (6)	Negative	—

Test Results (Unit: mg/kg)

Sample No.: L41315704

Sample Name: case

Supplier Name: Nantong Dehua Stainless Steel Products Co., Ltd.

Test Item	MDL	Test Result	RoHS Limit
Lead (Pb)	1	N.D.	1000
Cadmium (Cd)	1	N.D.	100
Mercury (Hg)	1	N.D.	1000
Hexavalent Chromium (Cr <sup>6+</sup> )	See Note (6)	Negative	—

The page below is blank



©Hotline 400-819-5688 www.ponytest.com

Pony Testing International Group Shanghai Co., Ltd.  
Company Address: No.35, 680, Gui Ping Road, Xuhui District, Shanghai

Beijing Lab: (010)83055000  
Shanghai Lab: (021)64851999  
Qingdao Lab: (0532)88706866  
Shenzhen Lab: (0755)26050909  
Tianjin Lab: (022)27360730  
Suzhou Lab: (0512)62997900  
Changchun Lab: (0431)85150908  
Dalian Lab: (0411)87336618  
Haerbin Lab: (0451)88104651  
Zhengzhou Lab: (0371)69350670  
Xinjiang Lab: (0991)6684186  
Shijiazhuang Lab: (0311)85376660  
Xian Lab: (029)89608785  
Huhehaote Lab: (0471)3450025  
Hangzhou Lab: (0571)87219096  
Ningbo Lab: (0574)87736499  
Wuhan Lab: (027)83997127  
Hefei Lab: (0551)63843474  
Guangzhou Lab: (020)89224310  
Xiamen Lab: (0592)5568048  
Chengdu Lab: (028)87702708





扫二维码  
关注谱尼测试



Pony Testing International Group

## Test Report

NO.: BNC5DGUL47172744

Date: 2019.01.29

Page 25 of 33

Test Results (Unit: mg/kg)

Sample No.: L41316704

Sample Name: Terminals

Supplier Name: Tongzhou Ping Chao Jianghai Metal products factory

Test Item	MDL	Test Result	RoHS Limit
Lead (Pb)	1	$2.80 \times 10^{4*}$	1000
Cadmium (Cd)	1	20	100
Mercury (Hg)	1	N.D.	1000
Hexavalent Chromium (Cr <sup>6+</sup> )	See Note (6)	Negative	—

Test Results (Unit: mg/kg)

Sample No.: L41317704

Sample Name: Terminals

Supplier Name: Ningbo Haishu Jinmao Electric Appliance Co., Ltd.

Test Item	MDL	Test Result	RoHS Limit
Lead (Pb)	1	475	1000
Cadmium (Cd)	1	N.D.	100
Mercury (Hg)	1	N.D.	1000
Hexavalent Chromium (Cr <sup>6+</sup> )	See Note (6)	Negative	—

- Note:
- (1) mg/kg = ppm
  - (2) “—” = Does not stipulate
  - (3) N.D. = Not Detected (<MDL)
  - (4) MDL = Method Detection Limit
  - (5) The most allowable limit value reference to RoHS Directive 2011/65/EU & (EU)2015/863 Annex II
  - (6) Boiling water extraction test:  
 $<0.10 \mu\text{g}/\text{cm}^2$  expressed as “negative” results, indicates without hexavalent chromium in the plating  
 $0.10 \mu\text{g}/\text{cm}^2 \sim 0.13 \mu\text{g}/\text{cm}^2$  expressed as “not confirmative”, indicates that it can not be confirmative for the presence of hexavalent chromium in the plating, further test is needed.  
 $>0.13 \mu\text{g}/\text{cm}^2$  expressed as “positive”, indicates that hexavalent chromium is detected in the plating.
  - (7) \*: According to applicant's declaration, samples comply with exempted Items of RoHS Directive, “6(c) Copper alloy containing up to 4% lead by weight.”
  - (8) The mixing sample test was performed as client's request. Result obtained only gives informality value and does not represent individual sample material

The page below is blank



©Hotline 400-819-5688 www.ponytest.com

Pony Testing International Group Shanghai Co., Ltd.  
Company Address: No.35, 680, Gui Ping Road, Xuhui District, Shanghai

Beijing Lab: (010)83055000  
Shanghai Lab: (021)64851999  
Qingdao Lab: (0532)88706866  
Shenzhen Lab: (0755)26050909  
Tianjin Lab: (022)27360730  
Suzhou Lab: (0512)62997900  
Changchun Lab: (0431)85150908  
Dalian Lab: (0411)87336618  
Haerbin Lab: (0451)88104651  
Zhengzhou Lab: (0371)69350670  
Xinjiang Lab: (0991)6684186  
Shijiazhuang Lab: (0311)85376660  
Xian Lab: (029)89608785  
Huhehaote Lab: (0471)3450025  
Hangzhou Lab: (0571)87219096  
Ningbo Lab: (0574)87736499  
Wuhan Lab: (027)83997127  
Hefei Lab: (0551)63843474  
Guangzhou Lab: (020)89224310  
Xiamen Lab: (0592)5568048  
Chengdu Lab: (028)87702708





扫二维码  
关注谱尼测试



Pony Testing International Group

## Test Report

NO.: BNC5DGUL47172744

Date: 2019.01.29

Page 26 of 33

Sample Photo:



WHOLE PART SUPPLIED BY CLIENTS

Pony authenticate the photo on original report only

Sample No. &Photo:



Pony authenticate the photo on original report only

The page below is blank



©Hotline 400-819-5688 www.ponytest.com

Pony Testing International Group Shanghai Co., Ltd.  
Company Address: No.35, 680, Gui Ping Road, Xuhui District, Shanghai

Beijing Lab: (010) 83055000	Changchun Lab: (0431) 85150908	Shijiazhuang Lab: (0311) 85376660	Wuhan Lab: (027) 83997127
Shanghai Lab: (021) 64851999	Dalian Lab: (0411) 87336618	Xian Lab: (029) 89608785	Hefei Lab: (0551) 63843474
Qingdao Lab: (0532) 88706866	Haerbin Lab: (0451) 88104651	Huhehaote Lab: (0471) 3450025	Guangzhou Lab: (020) 89224310
Shenzhen Lab: (0755) 26050909	Zhengzhou Lab: (0371) 69350670	Hangzhou Lab: (0571) 87219096	Xiamen Lab: (0592) 5568048
Tianjin Lab: (022) 27360730	Xinjiang Lab: (0991) 6684186	Ningbo Lab: (0574) 87736499	Chengdu Lab: (028) 87702708
Suzhou Lab: (0512) 62997900			



扫二维码  
关注谱尼测试



Pony Testing International Group

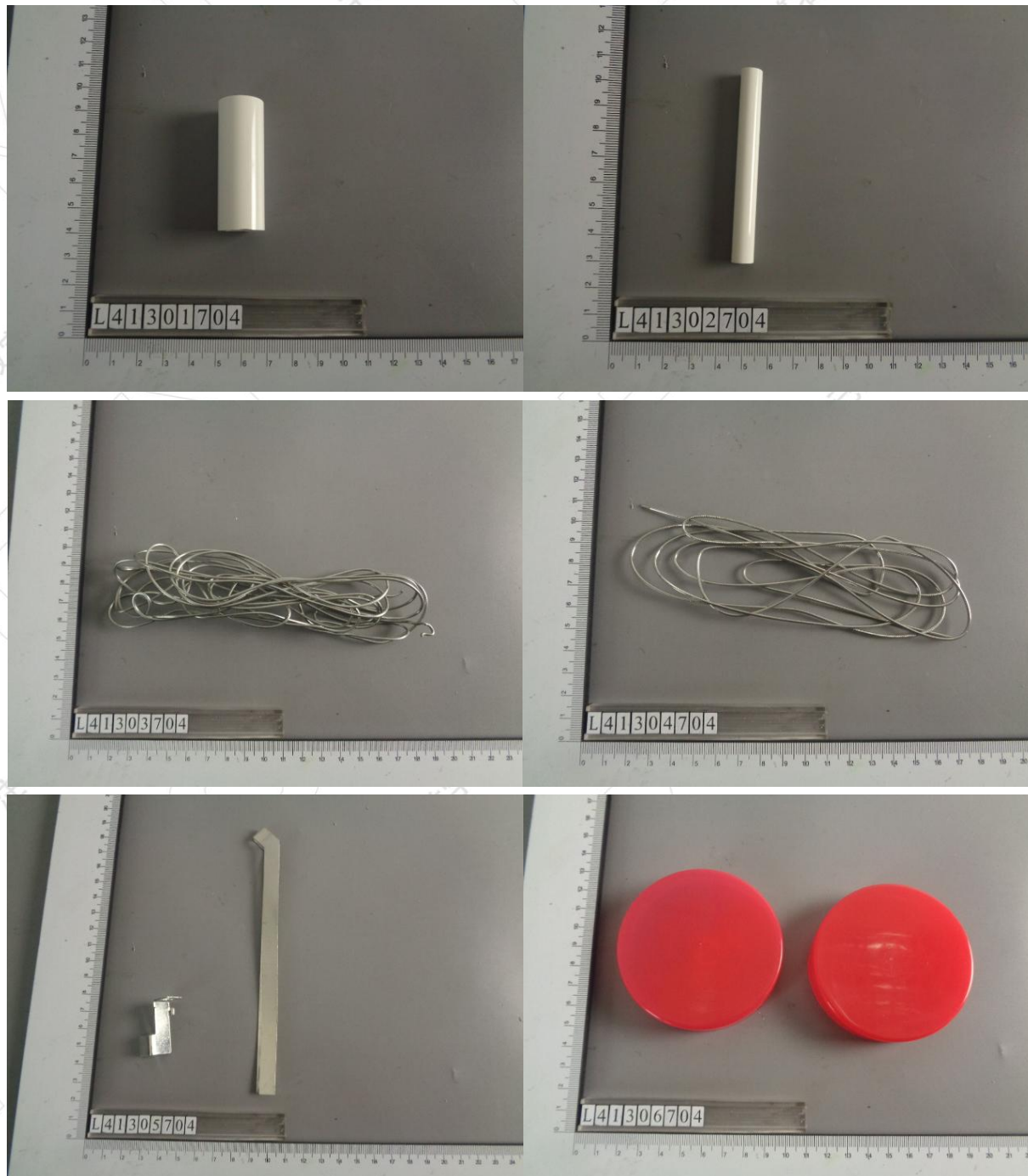
## Test Report

NO.: BNC5DGUL47172744

Date: 2019.01.29

Page 27 of 33

Sample No. & Photo:



Pony authenticate the photo on original report only

The page below is blank



©Hotline 400-819-5688 www.ponytest.com

Pony Testing International Group Shanghai Co., Ltd.  
Company Address: No.35, 680, Gui Ping Road, Xuhui District, Shanghai

Beijing Lab: (010) 83055000	Changchun Lab: (0431) 85150908	Shijiazhuang Lab: (0311) 85376660	Wuhan Lab: (027) 83997127
Shanghai Lab: (021) 64851999	Dalian Lab: (0411) 87336618	Xian Lab: (029) 89608785	Hefei Lab: (0551) 63843474
Qingdao Lab: (0532) 88706866	Haerbin Lab: (0451) 88104651	Huhehaote Lab: (0471) 3450025	Guangzhou Lab: (020) 89224310
Shenzhen Lab: (0755) 26050909	Zhengzhou Lab: (0371) 69350670	Hangzhou Lab: (0571) 87219096	Xiamen Lab: (0592) 5568048
Tianjin Lab: (022) 27360730	Xinjiang Lab: (0991) 6684186	Ningbo Lab: (0574) 87736499	Chengdu Lab: (028) 87702708
Suzhou Lab: (0512) 62997900			





扫二维码  
关注谱尼测试



Pony Testing International Group

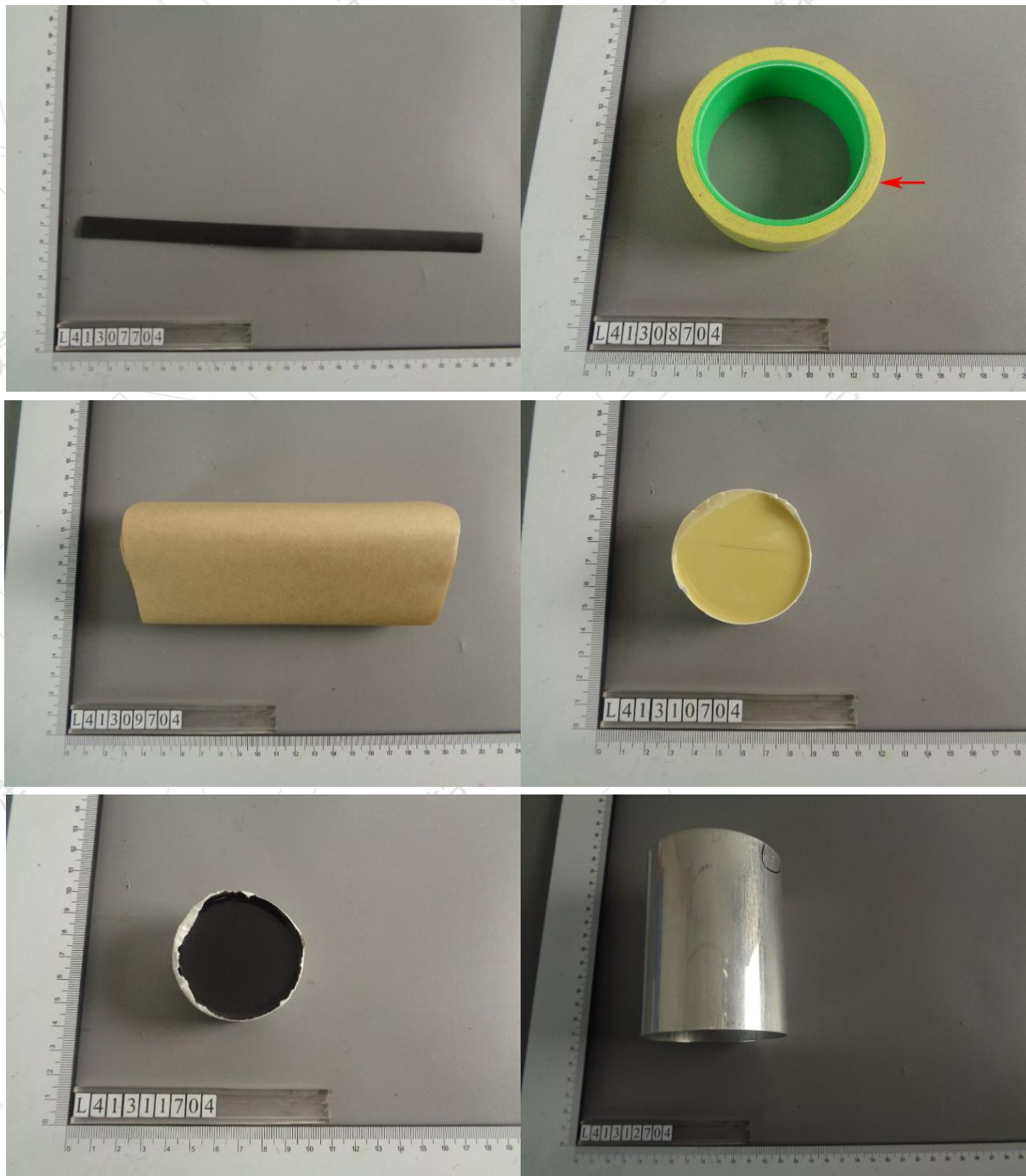
## Test Report

NO.: BNC5DGUL47172744

Date: 2019.01.29

Page 28 of 33

Sample No. & Photo:



Pony authenticate the photo on original report only

The page below is blank



©Hotline 400-819-5688 www.ponytest.com

Pony Testing International Group Shanghai Co., Ltd.  
Company Address: No.35, 680, Gui Ping Road, Xuhui District, Shanghai

Beijing Lab: (010) 83055000	Changchun Lab: (0431) 85150908	Shijiazhuang Lab: (0311) 85376660	Wuhan Lab: (027) 83997127
Shanghai Lab: (021) 64851999	Dalian Lab: (0411) 87336618	Xian Lab: (029) 89608785	Hefei Lab: (0551) 63843474
Qingdao Lab: (0532) 88706866	Haerbin Lab: (0451) 88104651	Huhehaote Lab: (0471) 3450025	Guangzhou Lab: (020) 89224310
Shenzhen Lab: (0755) 26050909	Zhengzhou Lab: (0371) 69350670	Hangzhou Lab: (0571) 87219096	Xiamen Lab: (0592) 5568048
Tianjin Lab: (022) 27360730	Xinjiang Lab: (0991) 6684186	Ningbo Lab: (0574) 87736499	Chengdu Lab: (028) 87702708
Suzhou Lab: (0512) 62997900			





扫二维码  
关注谱尼测试



Pony Testing International Group

## Test Report

NO.: BNC5DGUL47172744

Date: 2019.01.29

Page 29 of 33

Sample No. &Photo:



Pony authenticate the photo on original report only

The page below is blank



©Hotline 400-819-5688 www.ponytest.com

Pony Testing International Group Shanghai Co., Ltd.  
Company Address: No.35, 680, Gui Ping Road, Xuhui District, Shanghai

Beijing Lab: (010) 83055000	Changchun Lab: (0431) 85150908	Shijiazhuang Lab: (0311) 85376660	Wuhan Lab: (027) 83997127
Shanghai Lab: (021) 64851999	Dalian Lab: (0411) 87336618	Xian Lab: (029) 89608785	Hefei Lab: (0551) 63843474
Qingdao Lab: (0532) 88706866	Haerbin Lab: (0451) 88104651	Huhehaote Lab: (0471) 3450025	Guangzhou Lab: (020) 89224310
Shenzhen Lab: (0755) 26050909	Zhengzhou Lab: (0371) 69350670	Hangzhou Lab: (0571) 87219096	Xiamen Lab: (0592) 5568048
Tianjin Lab: (022) 27360730	Xinjiang Lab: (0991) 6684186	Ningbo Lab: (0574) 87736499	Chengdu Lab: (028) 87702708
Suzhou Lab: (0512) 62997900			



扫微信二维码  
关注谱尼测试



Pony Testing International Group

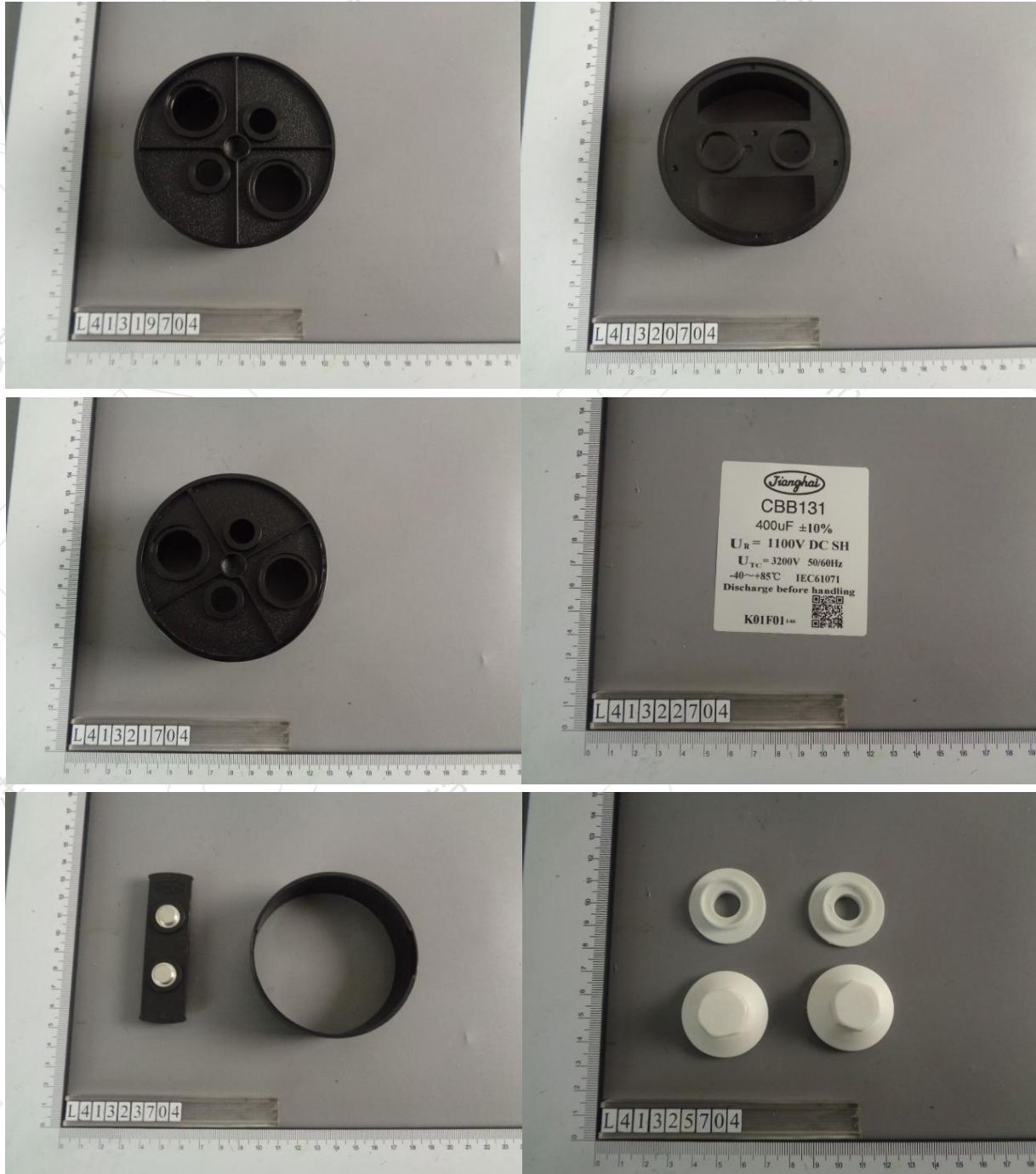
## Test Report

NO.: BNC5DGUL47172744

Date: 2019.01.29

Page 30 of 33

Sample No. & Photo:



Pony authenticate the photo on original report only

The page below is blank



©Hotline 400-819-5688 www.ponytest.com

Pony Testing International Group Shanghai Co., Ltd.  
Company Address: No.35, 680, Gui Ping Road, Xuhui District, Shanghai

Beijing Lab: (010) 83055000	Changchun Lab: (0431) 85150908	Shijiazhuang Lab: (0311) 85376660	Wuhan Lab: (027) 83997127
Shanghai Lab: (021) 64851999	Dalian Lab: (0411) 87336618	Xian Lab: (029) 89608785	Hefei Lab: (0551) 63843474
Qingdao Lab: (0532) 88706866	Haerbin Lab: (0451) 88104651	Huhehaote Lab: (0471) 3450025	Guangzhou Lab: (020) 89224310
Shenzhen Lab: (0755) 26050909	Zhengzhou Lab: (0371) 69350670	Hangzhou Lab: (0571) 87219096	Xiamen Lab: (0592) 5568048
Tianjin Lab: (022) 27360730	Xinjiang Lab: (0991) 6684186	Ningbo Lab: (0574) 87736499	Chengdu Lab: (028) 87702708
Suzhou Lab: (0512) 62997900			





扫二维码  
关注谱尼测试



Pony Testing International Group

## Test Report

NO.: BNC5DGUL47172744

Date: 2019.01.29

Page 31 of 33

### Measurement Flow-chart

Tested by: Yao Zhongqi

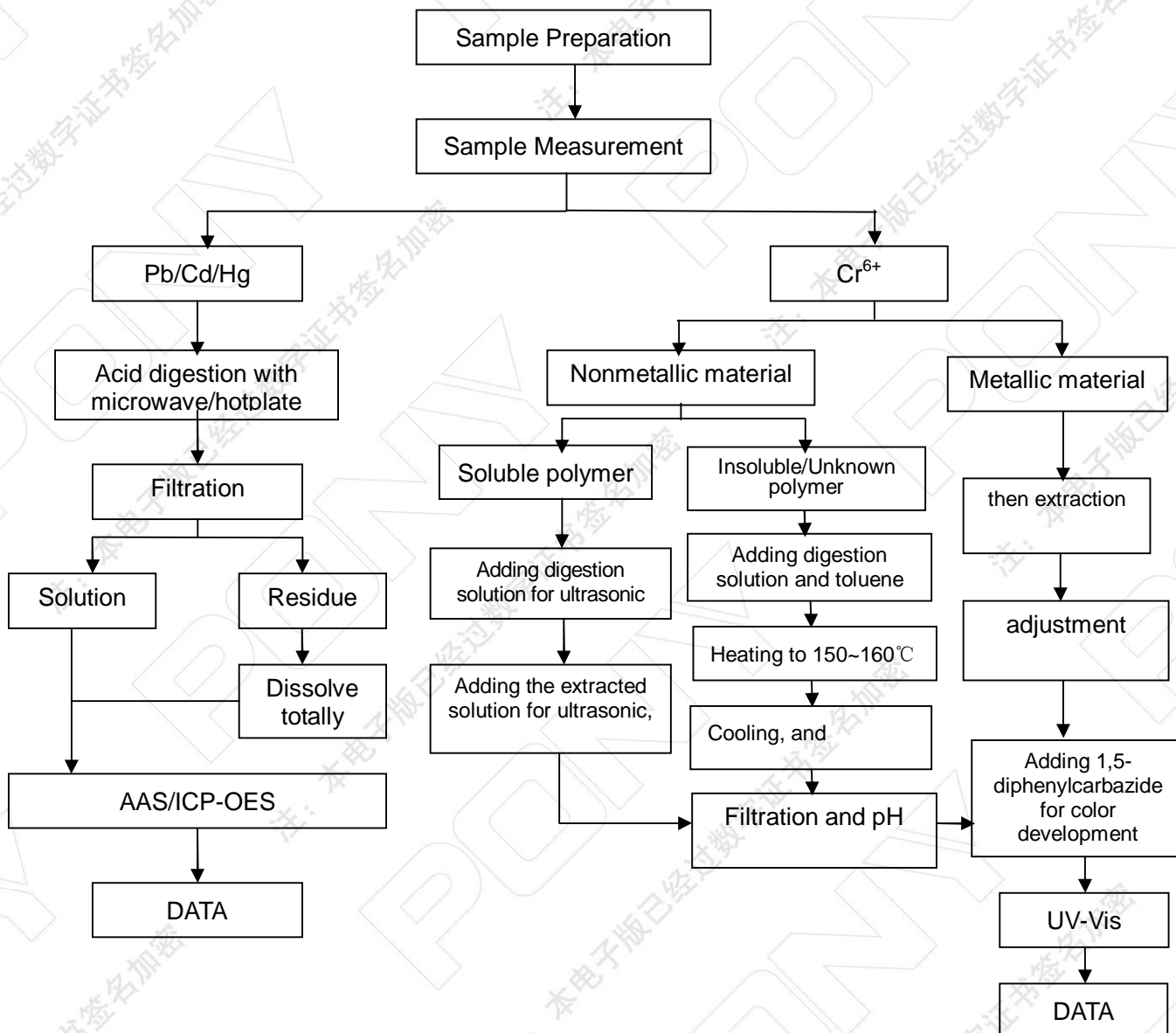
Checked by: Hao Haixiang

Person in charge of the lab: Cao Jia

These Samples Were Dissolved Totally By Pre-conditioning Method According To Below Flow Chart.

(Cr<sup>6+</sup> Test Method Excluded)

The page below is blank



The page below is blank



©Hotline 400-819-5688 www.ponytest.com

Pony Testing International Group Shanghai Co., Ltd.  
Company Address: No.35, 680, Gui Ping Road, Xuhui District, Shanghai

Beijing Lab: (010) 83055000  
Shanghai Lab: (021) 64851999  
Qingdao Lab: (0532) 88706866  
Shenzhen Lab: (0755) 26050909  
Tianjin Lab: (022) 27360730  
Suzhou Lab: (0512) 62997900  
Changchun Lab: (0431) 85150908  
Dalian Lab: (0411) 87336618  
Haerbin Lab: (0451) 88104651  
Zhengzhou Lab: (0371) 69350670  
Xinjiang Lab: (0991) 6684186  
Shijiazhuang Lab: (0311) 85376660  
Xian Lab: (029) 89608785  
Huhehaote Lab: (0471) 3450025  
Hangzhou Lab: (0571) 87219096  
Ningbo Lab: (0574) 87736499  
Wuhan Lab: (027) 83997127  
Hefei Lab: (0551) 63843474  
Guangzhou Lab: (020) 89224310  
Xiamen Lab: (0592) 5568048  
Chengdu Lab: (028) 87702708





扫二维码  
关注谱尼测试



Pony Testing International Group

## Test Report

NO.: BNC5DGUL47172744

Date: 2019.01.29

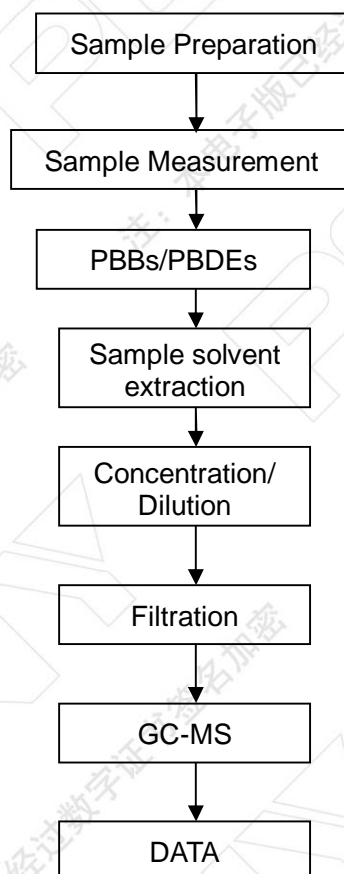
Page 32 of 33

### Measurement Flow-chart

Tested by: Zhang Shuo

Checked by: Hao Haixiang

Person in charge of the lab: Cao Jia



The page below is blank



扫二维码  
关注谱尼测试



Pony Testing International Group

## Test Report

NO.: BNC5DGUL47172744

Date: 2019.01.29

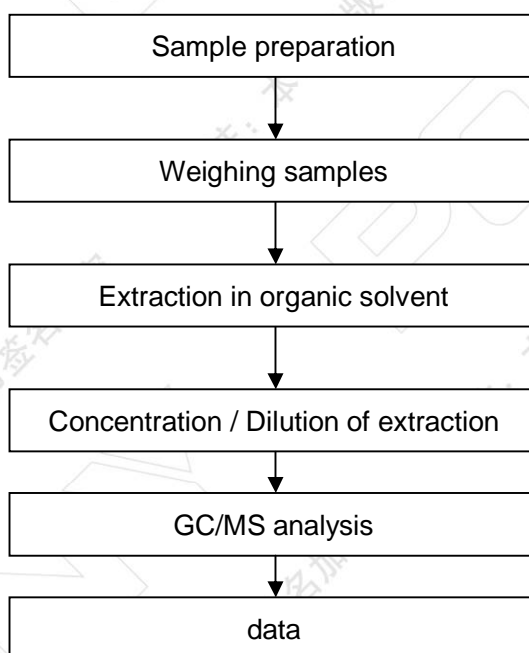
Page 33 of 33

### Phthalate Flow Chart

Tested by: Hu Xuegui

Checked by: Hao Haixiang

Person in charge of the lab: Cao Jia



\*\*\*End of Report\*\*\*